

# Huawei Intelligent Collaboration Solution

## For LawTech Fund





# Huawei Video Conferencing Solution – Product Portfolio

## Platform



SMC

Service management



VP9660



VP9650



VP9630



VP9860/VP9850/VP9830

Media control



CloudLink Edge 1000

All-in-one solution



SC (SwitchCenter)

Session control

## Terminals



CloudLink Mic 500



VPT300

Intelligent peripherals



VPC800



VPC600/620



CloudLink Camera 200



TE Desktop & TE Mobile

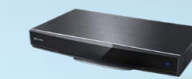
Personal terminals



CloudLink Bar 300



CloudLink Box 300/600



TE40/50



TE30



TE20



TE10

Video conferencing endpoints



MAX PRESENCE



TP3206-55/70



TP3206-65

Immersive telepresence



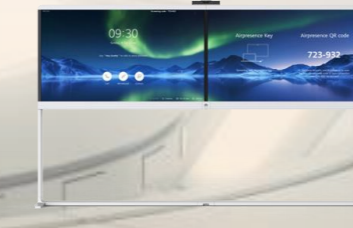
CloudLink Board  
65/65A

Collaborative Telepresence



CloudLinkRoomPresence  
65T

65T



CloudLinkRoomPresence  
65D

65D

Multi-functional telepresence



CloudLink RoomPresence  
65S/75S

65S/75S



# Seamless Collaboration in All Scenarios, Connecting You and Your Team Members Anytime, Anywhere

## Personal Office



TE Desktop & Mobile

## Collaborative Meeting



CloudLink ideahub

## Professional Meeting Room



CloudLink RoomPresence



TE10 TE20/30 CloudLink Box 300/600

## High-End Consultation Room



TP3206-55/65/70

Panoramic Telepresence



MAX PRESENCE

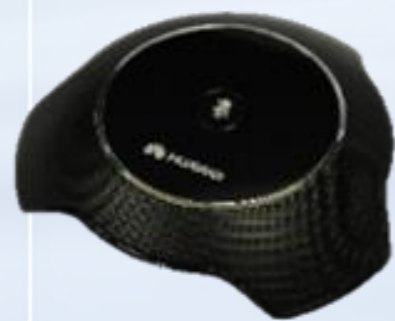


# Remote Hearings Solution Promotion Package

## Huawei Video Conference System



CloudLink Bar 300



CloudLink Mic 500

## Content Sharing Device



Visualizer

## Display



TV x 2



HK\$49,860

Including installation & 1 year maintenance service



# CloudLink Bar 300

Slim but Powerful, Smart and Agile

CloudLink Bar 300, Huawei's next-generation integrated HD video conferencing endpoint, features a "smarteye" and PTZ camera (a dual-lens design) to present an optimal view. It integrates a built-in camera, microphone, and codec to deliver 1080p HD videos and 4K data presentation, compact and easy to operate, perfectly suiting for small and medium meeting rooms.



## Simplified, Compact Design

- » 3-in-1: camera, microphone, and codec
- » Zero noise with fan-free design
- » Lens cover for privacy

## Optimal View

- » Auto-framing through a "smart eye" and full- HD to present an optimal view
- » 5x/12x optical PTZ, presenting every detail even from a distance

## High Scalability

- » Dual HDMI output ports, allowing dual screens



# CloudLink Box

## Ultimate Performance, Unlimited Scalability

The CloudLink Box, Huawei's next-generation ultra-HD video conferencing endpoint, provides a powerful audio and video media processing engine and extensive audio and video ports. It can be used with a variety of cameras and display devices in meeting rooms of all sizes.



### 4K Ultra-HD

- » 4K H.265 video or content
- » SVC-based video viewing in multiple layouts
- » Intelligent Rate Control (IRC), Super Error Concealment (SEC), and data anti-jitter based on the VLAN Trunk Protocol (VTP)

### Extensive Audio and Video Ports

- » Input and output of multiple video sources and connection to two or more screens
- » Compatible with various mainstream AV devices
- » Microphone cascading allowed

### Simplified Meeting Control

- » 10-inch touch panel
- » User-friendly GUI
- » PoE power supply and Kensington lock

# Peripherals: Cameras and Microphones

## CloudLink Camera 200



- ✓ 4K30 12x optical zoom, 80° wide-angle, 8.51 megapixels
- ✓ Ceiling-mounted, mounted on top of a display, placed on a tabletop, etc.
- ✓ 254 presets
- ✓ Image output through HDMI and USB3.0



VTP300

- ✓ Sound localization and face detection
- ✓ Built-in **dual-camera** system, **12x** optical zoom
- ✓ "Horizontal + vertical" microphone array
- ✓ **Speaker tracking**



VPC6x0

- ✓ **VPC600**: 1080p60, 12x optical zoom, pan 72°/tilt 44.5°
- ✓ **VPC620**: 1080p60, 12x optical zoom, pan 72°/tilt 44.5°, 3G-SDI



VPC800

- ✓ **VPC800**: 4K60/1080p60, 12x optical zoom, pan 80°/tilt 50°, 3G-SDI



CloudLink Mic 500

- ✓ Plug-and-play and powered by the connected endpoint
- ✓ 360° sound pickup at a radius of 6 meters
- ✓ Cascading of up to three levels



# Huawei IdeaHub

## Intelligence at your fingertips

Incorporating interactive whiteboard, UHD projection, video conferencing and open office AppGallery, Huawei IdeaHub series is your new option for smart office in meeting room, open office, executive boardroom, home office and many other scenarios.



### All-in-one Design, Easy Deployment

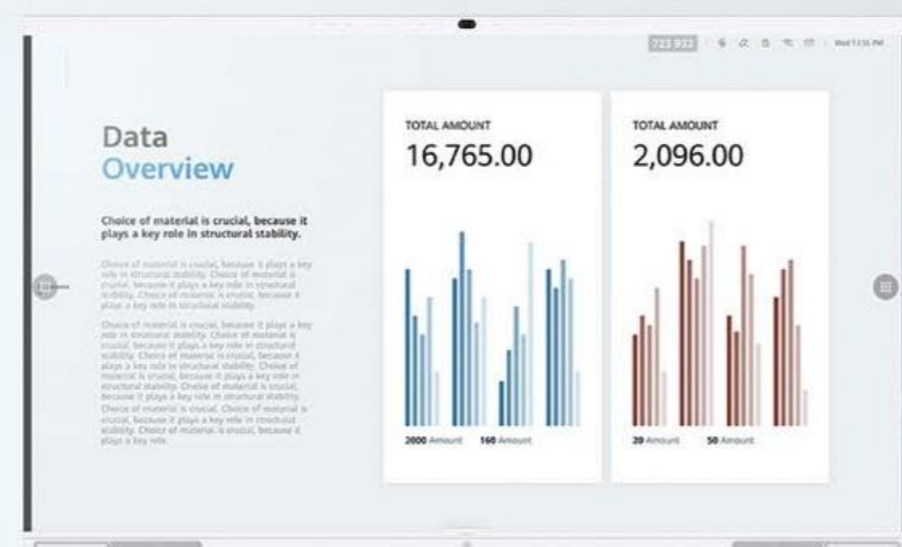
- » Integrated design for quick deployment, plug- and-play
- » 4K wireless projection, two-way annotation and collaboration
- » Ultra-low writing latency of just 35 ms, Intelligent handwriting recognition
- » Intelligent HD meeting, flexible layout with AVC/SVC technology

### Device –cloud Synergy, Enormous Apps

- » Popular apps pre-installed, customizable homepage
- » Huawei AppGallery with a rich store of HD apps
- » Private application portal and web app distribution

### Open Software and Hardware for Industry Applications

- » Windows platform extension, OPS: optional extension module for Windows
- » Open SDK: allows 3rd-party to use hardware and audiovisual capability
- » Smart finance, smart education, smart healthcare





# Product Datasheet

Cloudlink Bar 300: <https://e.huawei.com/en/material/enterprise/7c3bbb29754d46edba2b41b30a4995be>

Cloudlink Box 300 / 600: <https://e.huawei.com/en/material/communication/5a627bbaeeb64f08b24c9615283ea246>

Ideahub: <https://e.huawei.com/en/material/collaboration/0fb02019bd684885859e40b8829c1e4e>

